

Changes in the epidemiology of invasive meningococcal diseases during the COVID-19 pandemic in Germany

Manuel Krone, Thiên-Trí Lâm, Heike Claus, Ulrich Vogel

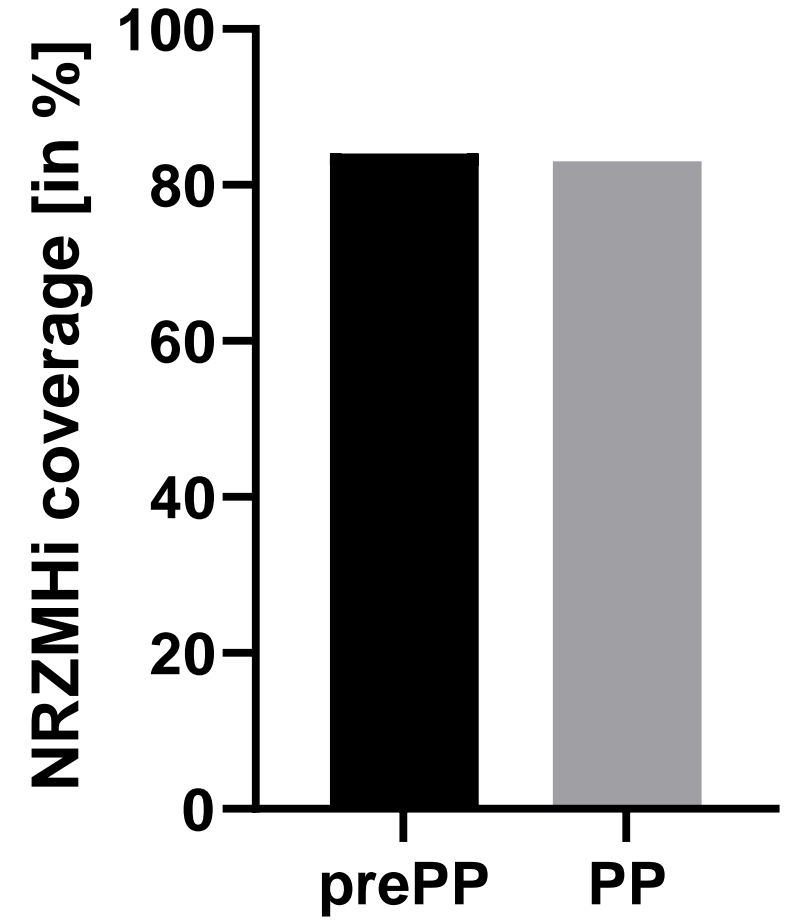
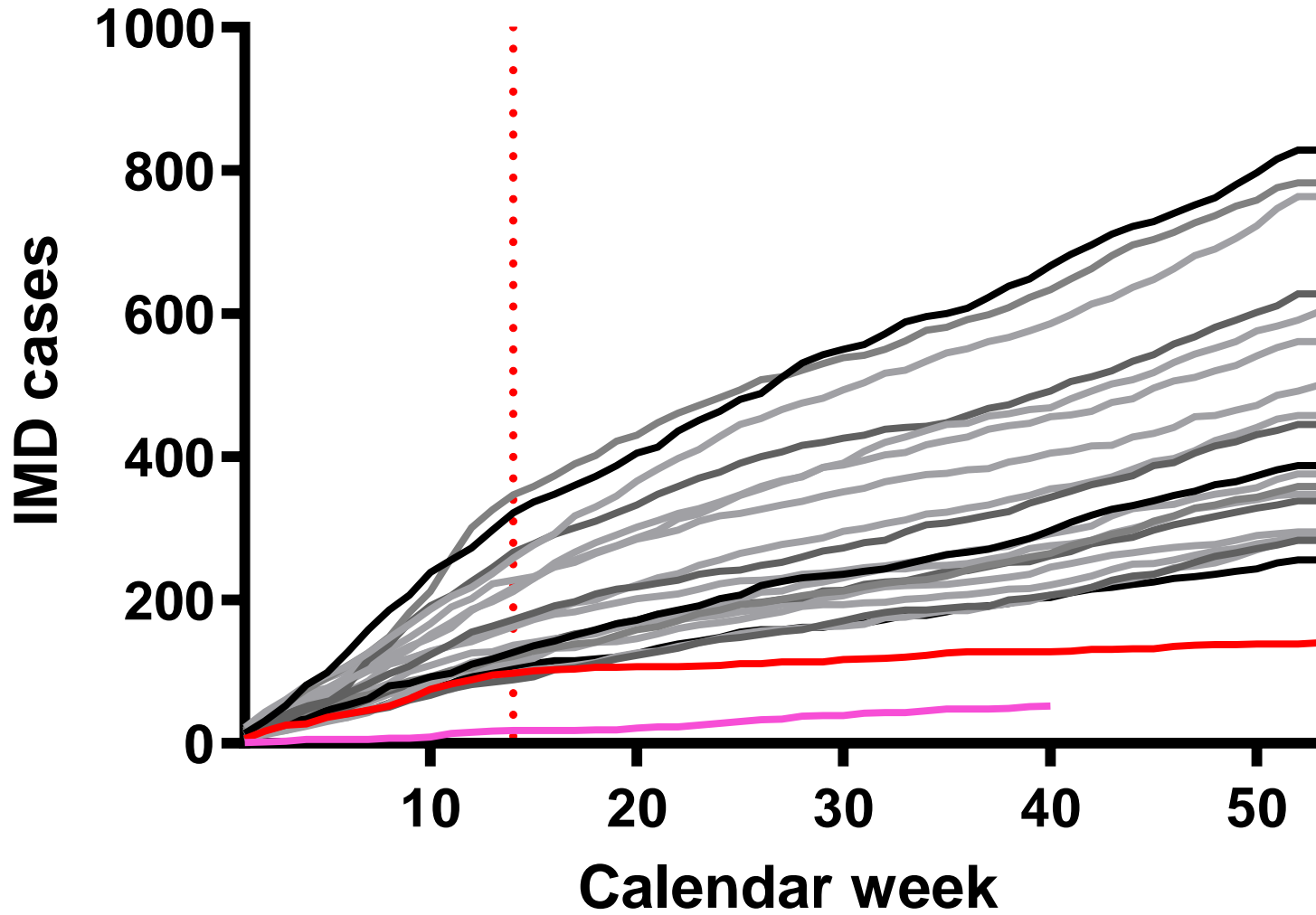
No conflicts of interest



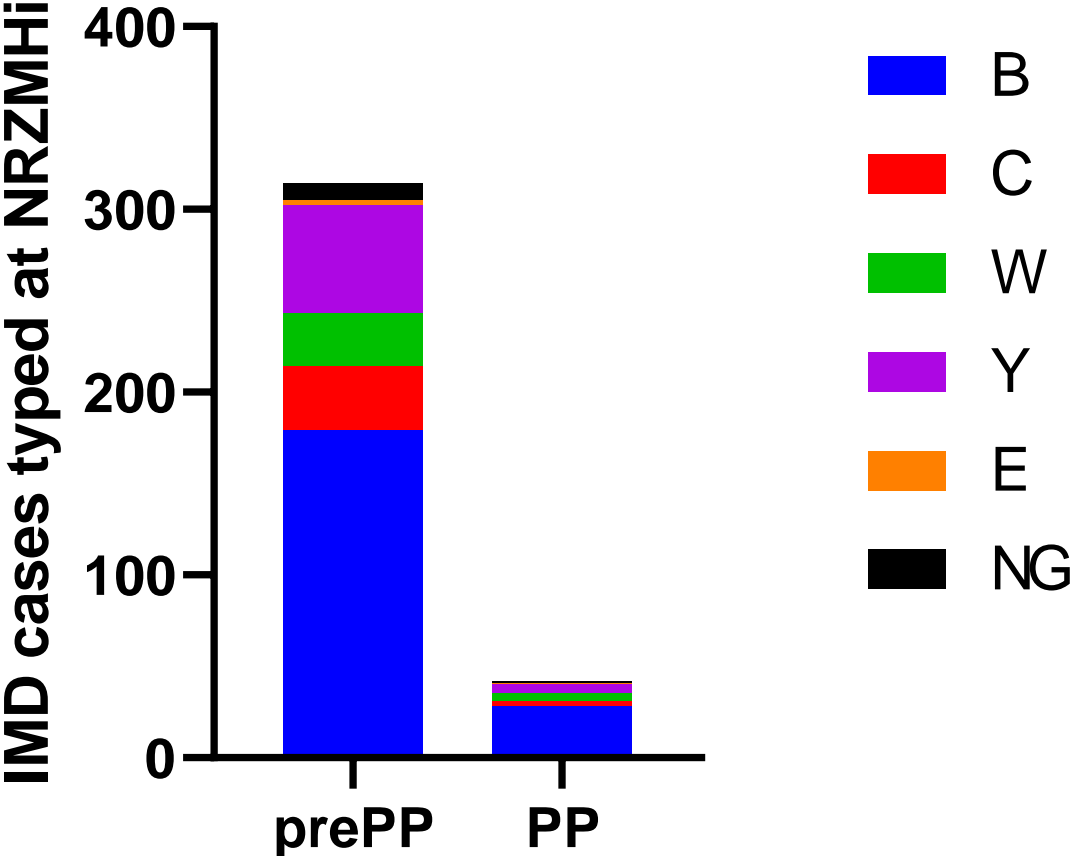
The year 2020



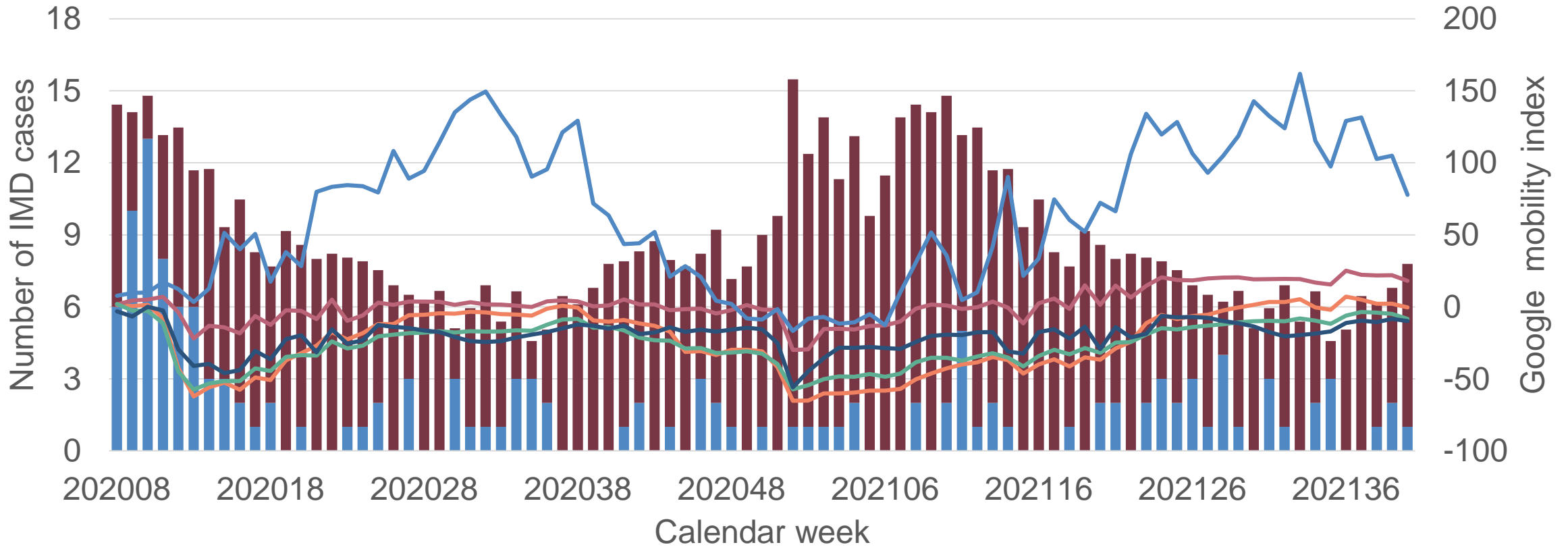
IMD numbers 2009 - 2021



Changes in IMD epidemiology



IMD cases and mobility



- Reported numbers
- Retail and Recreation
- Parks
- Workplaces
- Average number of cases 2009-2019
- Grocery and Pharmacy
- Transit stations